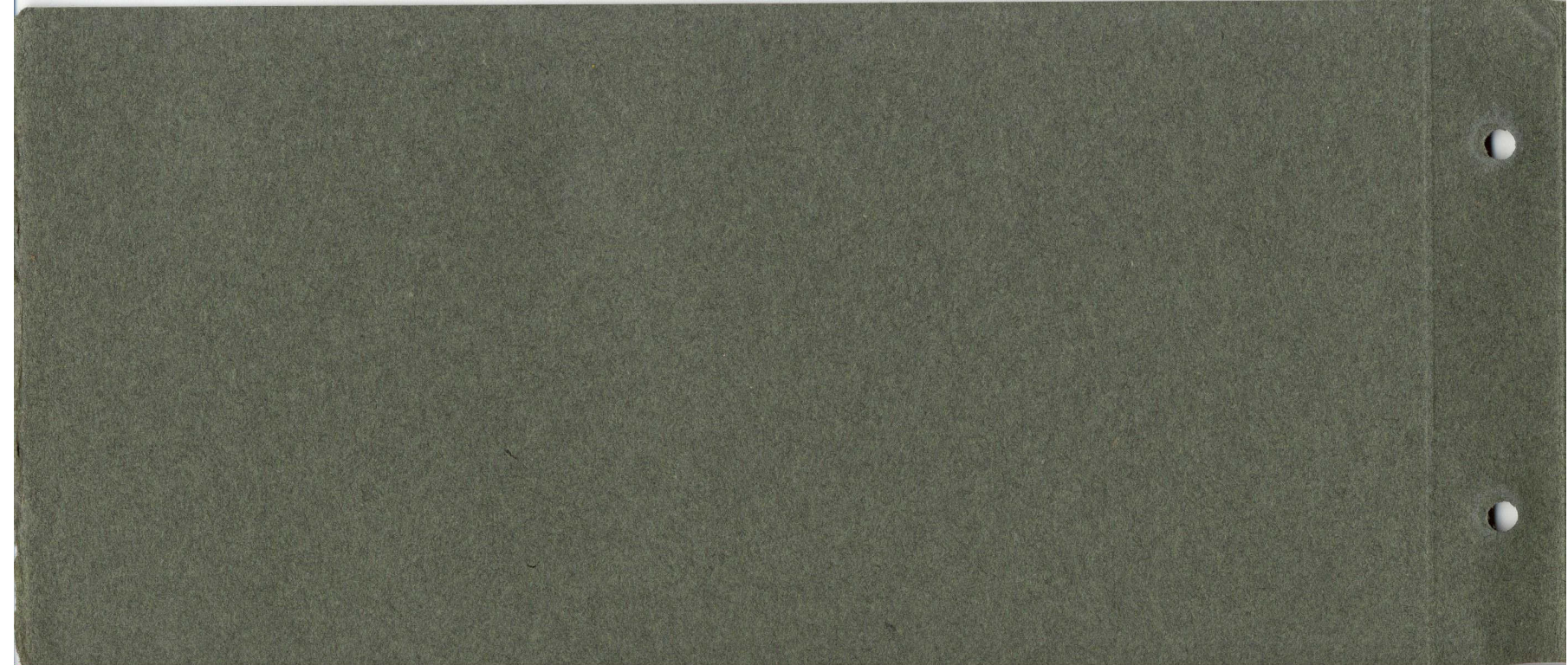


THE STANLEY-BOSTON COMPANY

STANLEY

MODEL 740

620 COMMONWEALTH AVENUE - BOSTON



# POWER

CORRECTLY GENERATED

CORRECTLY CONTROLLED

CORRECTLY APPLIED TO THE REAR WHEELS

LOW GRADE FUELS USED SUCCESSFULLY —  
EITHER KEROSENE OR GASOLENE

The STANLEY does not offer from year to year a new and radically changed car. Twenty-five years experience permits making a definite distinction between changes and improvements. These improvements and refinements which are offered in the new Model 740 STANLEY are consistent only with progress.

Twenty-five years of continuous progress in one direction permit us to offer, in the new STANLEY, the most flexible, silent, durable, and proven automobile ever offered for delivering uninterrupted, comfortable transportation with assurance.

## SPECIFICATIONS

*Body.* Aluminum; stream line; front seat, 43 inches wide; rear seat, 48 inches wide. Outside door handles; inside door latches. Large pockets in each door; tool compartment in left front door. Leather robe strap. Broad foot rest and vanishing auxiliary seats in tonneau. Carpet in tonneau. Metal bound rubber-covered foot boards in front compartment. Crowned black enamel fenders.

*Color.* Body, hood and wheels Brewster Green.

*Upholstery.* Soft, black, bright long grain leather, French fold, with curled hair. Wide, deep cushions.

*Top.* Permanent heavy pantasote lined. Door-opening side curtains.

*Windshield.* Ventilating and rain-vision.

*Lights.* Nickel Drum. Combined headlights and dimmers with separate bulbs; dash and tail lights; burner light. Current supplied by Bijur generator with Weston ammeter and Willard Thread-Rubber battery.

*Horn.* Klaxon, under hood. Button at top of steering post.

*Steering Gear.* Worm and gear type, with 18-inch steering wheel.

*Wheel Base.* 130 inches, with 56-inch tread.

*Wheels.* 32 x 4½ with Firestone demountable rims.

*Tires.* Goodyear or Goodrich cord. Groove tread front, non-skid rear 32 x 4½ straight side.

*Springs.* Semi-elliptical front; full-elliptical rear; oil covers.

*Frame.* Channel section pressed steel.

*Front Axle.* I-beam Roller bearings.

*Rear Axle.* Stanley design with Roller inside and Ball outside bearings.

*Brakes.* On rear wheels with 16-inch drum and 2½-inch face; expanding hand emergency brake; contracting pedal service brake.

*Engine.* Two cylinders, 4 x 5, slide valves, double acting; bolted to rear axle and geared direct to differential main gear. Roller bearing throughout.

*Boiler.* Standard Stanley fire-tube water-level type, welded construction, 23-inch diameter, 18-inch high.

*Burner.* Standard Stanley metal lined drilled type. Burns either kerosene or gasoline or any mixture of the two.

*Pilot.* Initial heating, electrical from Willard battery, then supplied with fuel (gasoline) from 3 gallon tank.

*Kero Tank.* At rear; 17 gallons capacity with gauge.

*Water Tank.* Suspended under frame, 24 gallon capacity with gauge, giving mileage of 150 to 250 miles.

*Pumps.* Long stroke, plunger type, driven from rear axle.

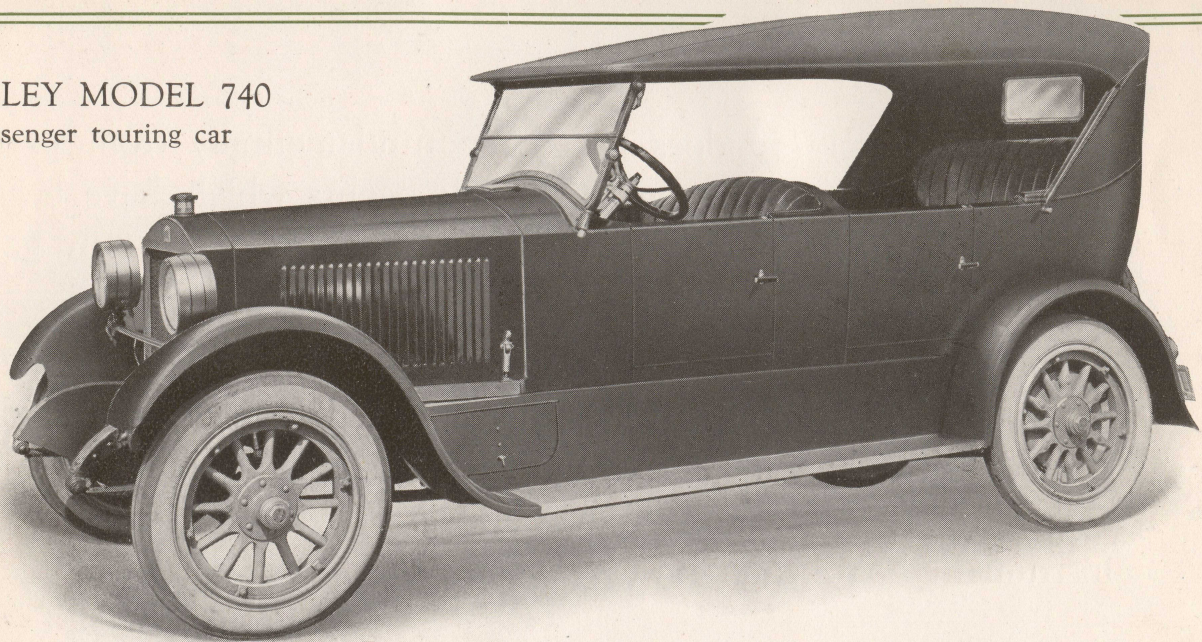
*Radiator.* Tube and fin type; seamless tubing; flat front. Cast aluminum heads with detachable shell.

*Air Tank.* For supplying air pressure.

*Lubrication.* Entire differential and engine assembly enclosed, and run in oil bath. Cylinders lubricated by positive pump from 1½-gallon cylinder oil tank under front seat. 2500 miles to the gallon.

*Instrument Board.* With steam gauge; duplex fuel gauge; oil gauge; Van Sicklen speedometer with electric clock.

STANLEY MODEL 740  
7-passenger touring car



Price delivered in Boston \$2801.25

The new Model 740 does not differ fundamentally from previous models. The improvements and refinements which have been incorporated lend a more pleasing appearance to the car in general and add to its efficiency.

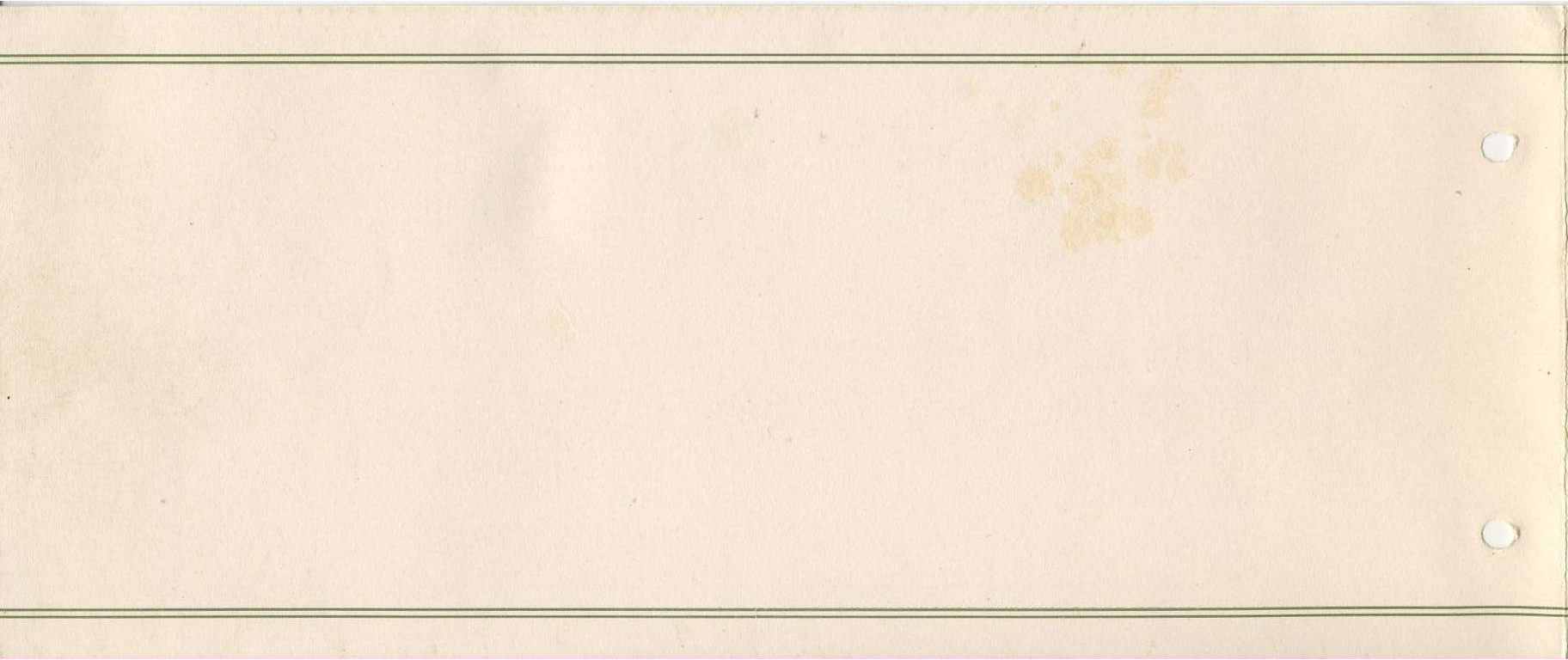
It is mounted closer to the ground, having 32" x 4½" tires; lower running boards; more sturdy, fully crowned fenders; nickel drum-shaped headlights; larger and more efficient brakes; boiler 4" higher, supplying greater heating surface and greater reserve; more compact instrument board, and lower set top.

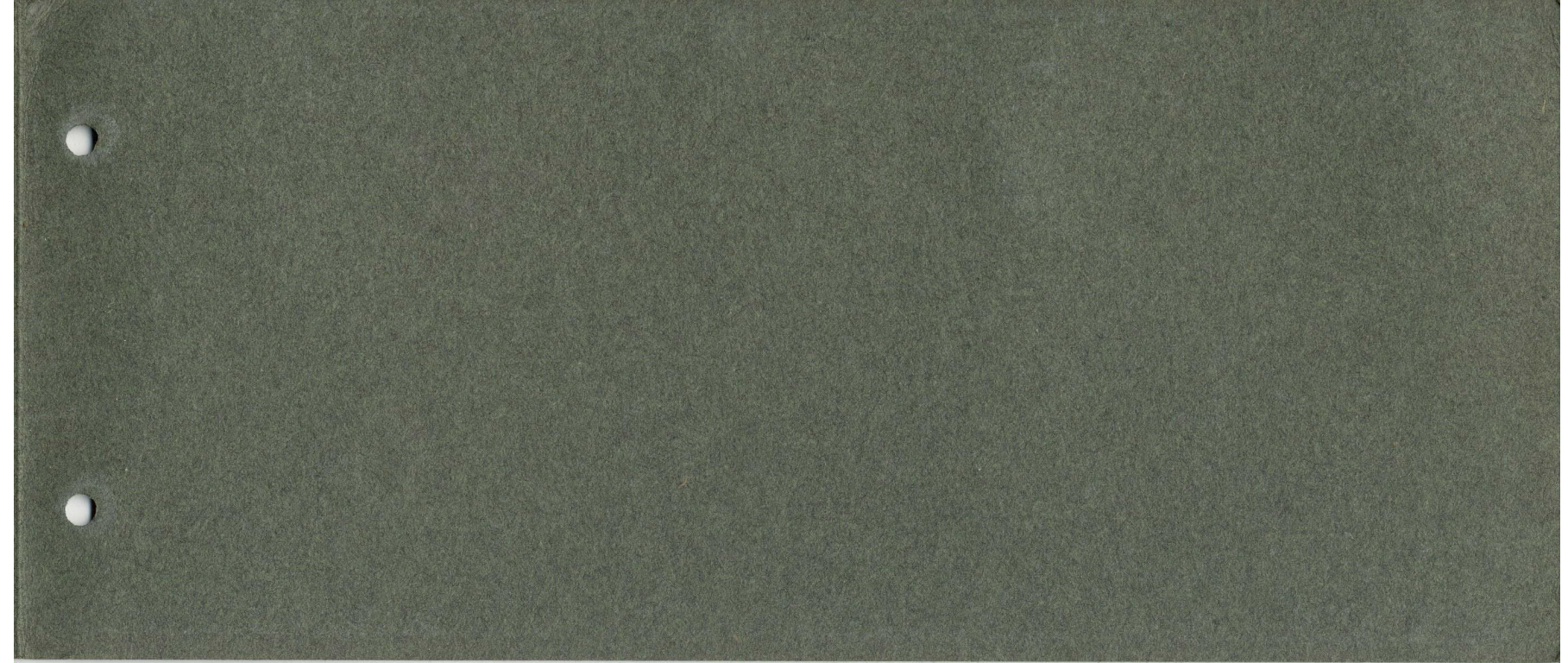


The top is designed to remain up permanently, no bows being visible and is so constructed that a winter curtain attachment can be readily installed at a nominal cost.

The lubricating system is a positive forced feed permitting greater mileage per gallon.

All parts which here-to-fore have been oiled or greased by oil cups or grease cups are now lubricated with a high-pressure greasing system.





THE  
STANLEY-BOSTON  
COMPANY



---

THE STANLEY-BOSTON COMPANY

STANLEY

MODEL 740

620 COMMONWEALTH AVENUE - BOSTON

---

THE  
STANLEY-BOSTON  
COMPANY