

Stanley

Almanac

H. L. Frost.

Stanley Steam Cars

Preliminary Announcement
for the Season of

1912

*Our Fifteenth Year of
Automobile Manufacturing*

Stanley Motor Carriage Company
Newton, Mass.

Model 62, Ten H. P. Runabout for 1912

\$1,000

Engine. $3\frac{1}{4}$ x $4\frac{1}{4}$ inches, running in oil bath. Cotter-pin nuts throughout. Ring pistons. Aluminum diaphragm or baffle-plate set $4\frac{1}{2}$ inches back from cylinder case with a separate $4\frac{1}{2}$ inch center case, which can be removed without disturbing the main center case, thus giving free access to the stuffing boxes, and preventing the leakage, if any, from getting into the main center case. Gear ratio 40 to 56, so that the engine makes only 886 revolutions to the mile. Hooking-up device as on all our recent cars. Taper bearings for engine hanger strap with cotter-pin nuts, easy of adjustment, the bearing on the cylinders being accessible without removing the cylinder-case.

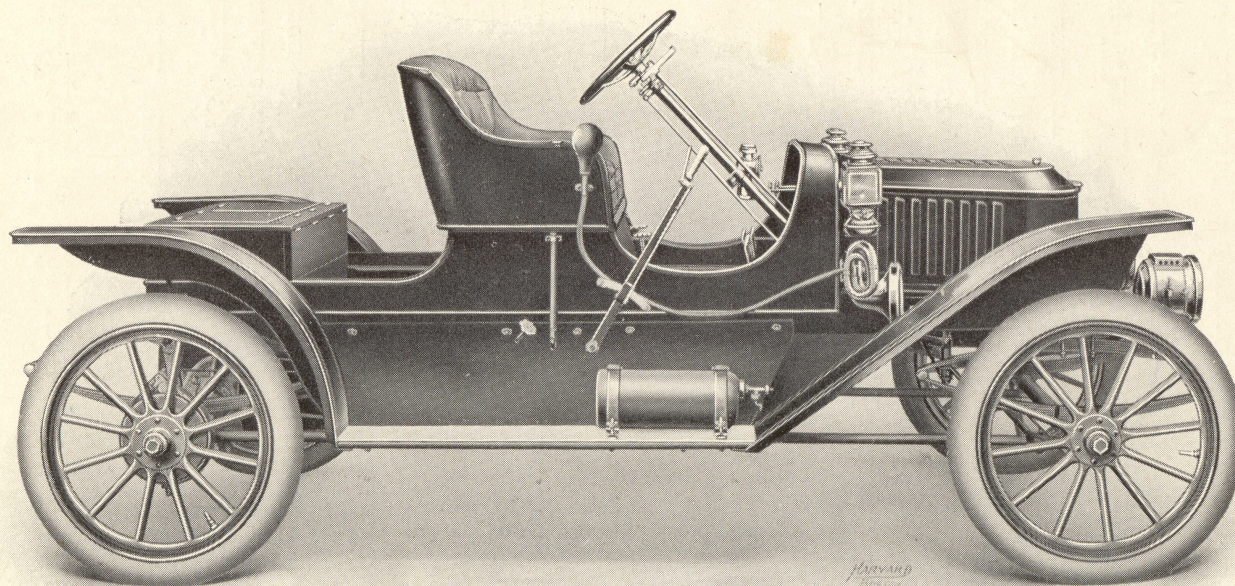
Boiler. 18 inches in diameter, of regular Stanley type; lower head and shell pressed out of one piece of steel; top head welded in by oxy-acetylene process. Superheaters heavy gauge steel tubing, heavily nickel plated. Extension water feed, feeding the water to the boiler below the water level.

Burner. 18 inches in diameter, regular Stanley type.

Throttle. Detachable without removing the smoke bonnet, etc.

Pumps. All four pumps (two for water, one for gasolene, one for cylinder oil) are driven direct, without links or ratchets, and all four are actuated by but three moving parts.

Muffler. As in our 1910 and 1911 cars, silencing the exhaust to the minimum.



MODEL 62, RUNABOUT, TWO PASSENGERS

Price, \$1,000, including headlights and Prest-O-Lite tank; nickel finish throughout. Top for front seat only, \$40 extra.

Specifications — Continued

Front Axle. 2 inch, heavy gauge tubing.

Rear Axle. 2 inch, heavy gauge tubing. Continuous truss rod, adjustable at both outside ends. Oval yoke around the differential.

Differential. Bevel gear type, with 6-pitch steel spur driving gear.

Brakes. Two sets on hubs — internal expanding and external contracting brakes, thermoid lined. Foot lever for the controlling brake. Hand lever for the emergency brake.

Wheel Base. 104 inches.

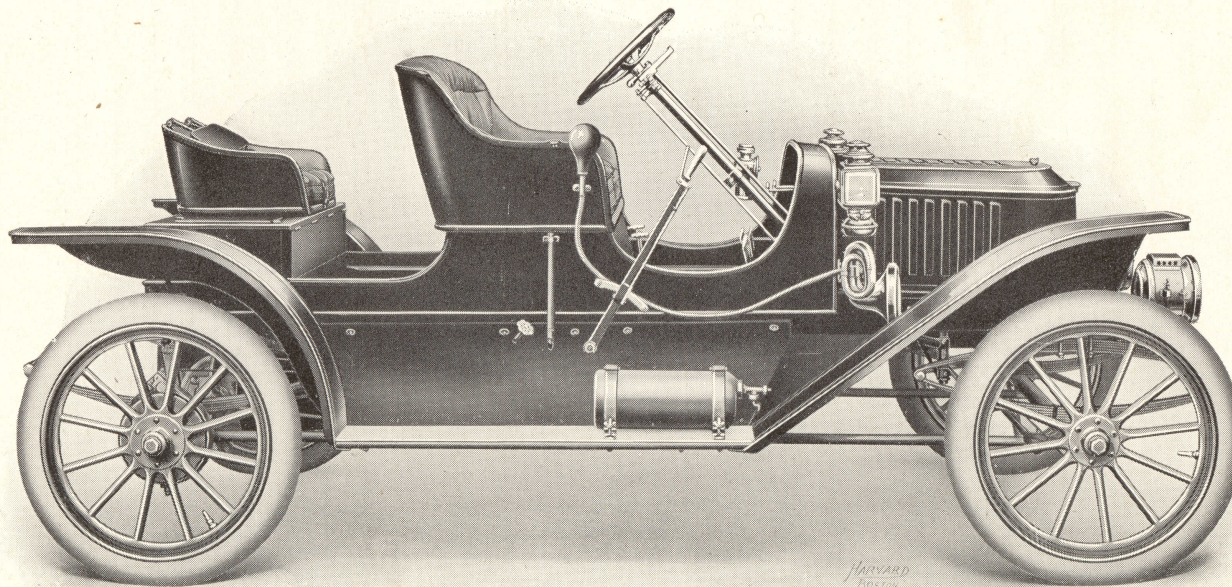
Tread. 56 inches.

Wheels. 32 x 3½ inches. Twelve spokes, finest second growth hickory.

Steering Gear. Of the pinion and sector type. Adjustable steel pinion at the end of the steering post meshed into steel sector gear. Adjustable cone bearings on front wheel spindles. Oil cups on all other steering gear bearings including two on the sector gear stud. Front axle forks which carry the front wheel spindle are set at an angle to reduce the effort of steering — a practice always followed in Stanley cars.

Steering Wheel. 16 inch, sub-imposed upon which are the throttle and by-pass levers.

Springs. Full elliptical, front and rear, 36 inches long.



MODEL 62, WITH RUMBLE SEAT

Price, \$1,020, including head lights and Prest-O-Lite tank; nickel finish throughout. Top for front seat only, \$40 extra.

Specifications — Continued

Mudguards. Pressed steel mudguards, front and rear, with dropped extension at their outer edge. Front mudguards have integral aprons connected with the body. The rear guards have integral aprons extending 6 inches below the mudguard.

Body. Body and sills are of finest ash, the body bayed out 2 inches at either side at about the point of the dashboard, making it wider at the rear than at the front. The toe board of the front seat is set up at a sharp angle, thus giving a brace for the feet.

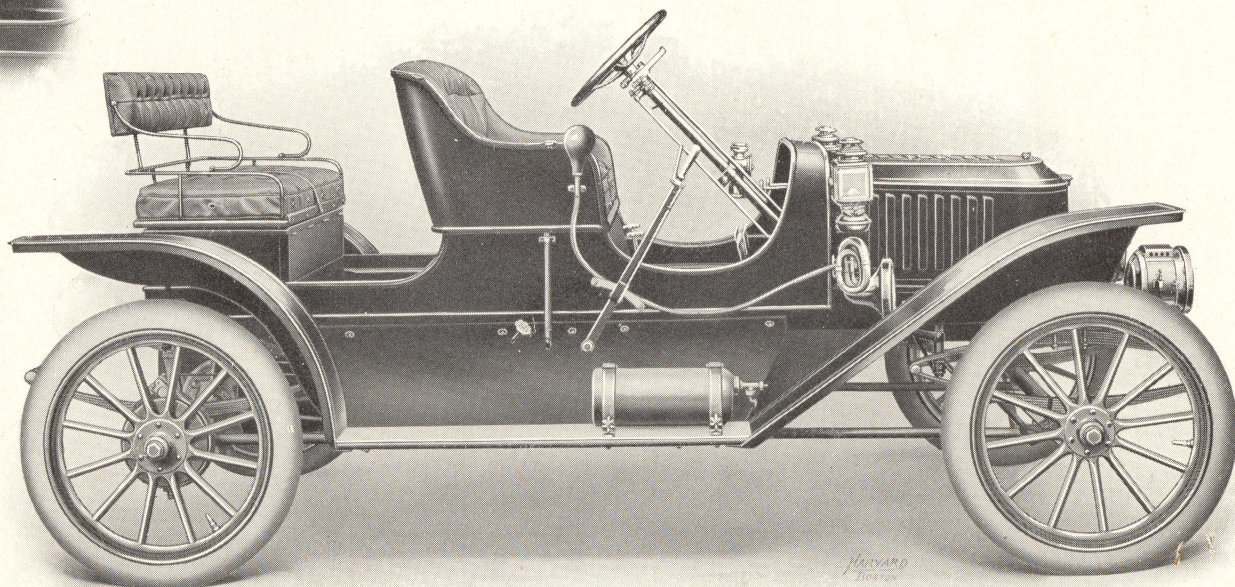
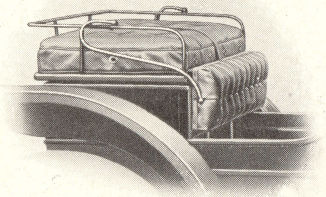
Seats. Ironed for top. Front seat has full panel back with partition in the front, the cushions tilted back. For the rear seat we can furnish a single rumble seat at \$20; a pair of rumble seats at \$40; or a flat upholstered folding-back seat for two people for \$20. When a full rear seat is sold with a car, the cover of the rear box will not be furnished, except when especially ordered, and at an extra charge of \$5.

Water Tank. Under the front seat; capacity 28 gallons (35 to 45 miles). Strainer easily removed for cleaning. Over-flow stand pipe giving vent so that it is unnecessary to remove the the water tank cap when syphoning.

Gasolene Tank. At extreme rear, completely protected by the rear box. Capacity 16 gallons (150 to 175 miles).

Weight. About 1,400 pounds.

Equipment. Headlights with Prest-O-Lite tank. Two oil side lamps. One oil tail lamp. One oil gauge lamp. Serpentine horn. Pressed steel tool box. Full equipment of tools, including tire repair kit and jack.



MODEL 62, WITH FLAT REAR SEAT

Price, \$1,020, including headlights and Prest-O-Lite tank; nickel finish throughout. Top for front seat only, \$40 extra.

Model 73, Twenty H. P. Touring Car, Five Passenger, for 1912

\$1,660 with Equipment

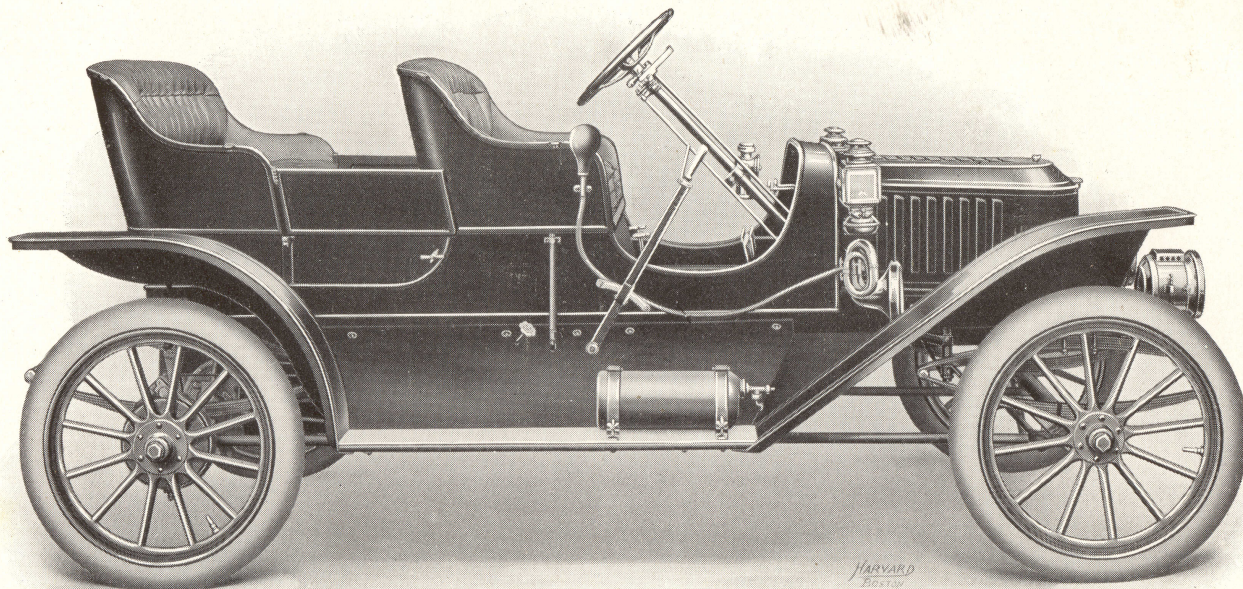
Our Model 73 car is a five passenger touring car with our 20 horse-power plant. This plant consists of a 23 inch boiler and a 4 x 5 engine. The engine is equipped with an oil-tight, dust-proof case, the rear members of which are of aluminum. The engine, differential and axle thus run in an oil bath. For full description of engine and other parts (which are alike in all models, except as to size), see the specifications of Model 62.

The Model 73 as well as the Model 74 four passenger 20 horse-power car, is built on the chassis plan; that is the body is detachable from the chassis. The sills or frame are of wood, thus adding to the resiliency and easy riding of the car. The body is of the fore-door, flush-side or "torpedo" type, made of aluminum. The bodies are not pressed, but are hand-made, of the same materials, by the same workmen and in the same factory that makes the bodies for some of the best \$5,000 and \$6,000 cars in America.

The equipment includes head lights and Prest-O-Lite tank: four-bow top with side curtains and slip cover; glass front; speedometer; oil lamps, horn, tool box, tools, robe rail, foot rest, etc. The running boards are metal-bound. The splash curtains between running boards and sill are of metal.

The water tank, with outside filler, at the rear, holds 45 gallons, capable of upwards of 50 miles. The gasolene tank holds 20 gallons.

The upholstery is unusually comfortable. The tonneau is large and roomy. All the seats, including the driver's seat, have been designed primarily with a view to comfort.



MODEL 63, WITH DETACHABLE TOY TONNEAU

Price, \$1,175

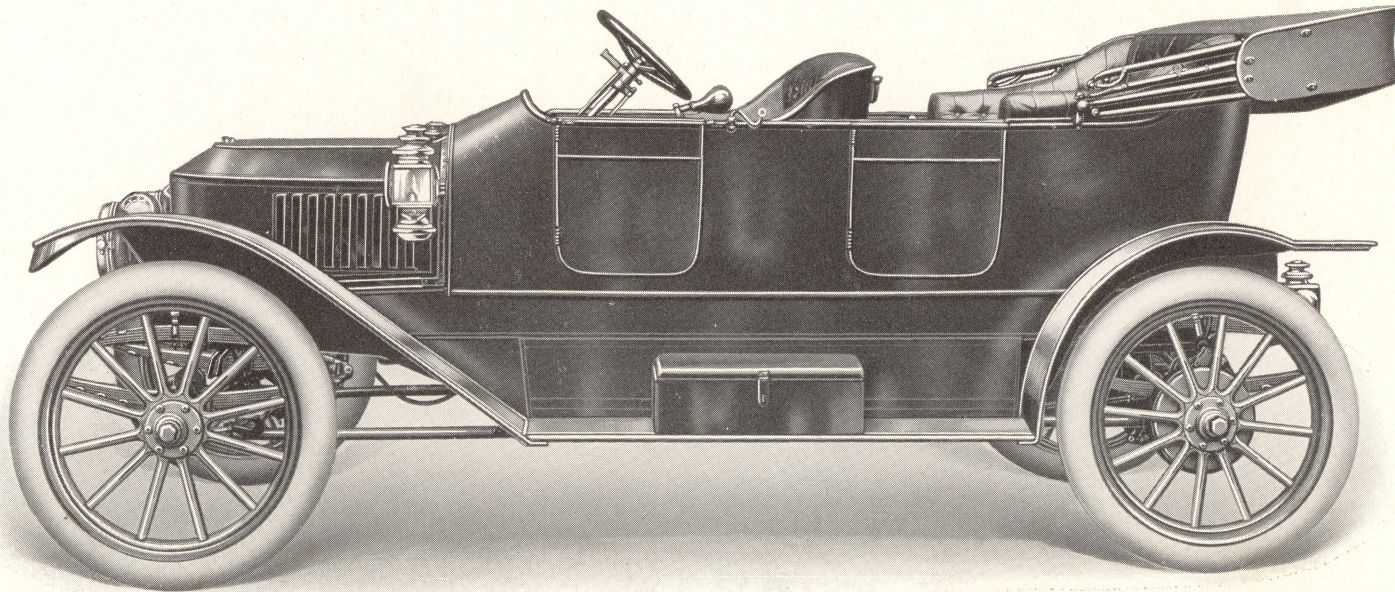
This car is the same as the Model 62, except that it is equipped with two passenger tonneau which may be removed, giving a runabout as on page 3.
The Model 63 will be sold as above, at \$1,175, which price includes headlights and Prest-O-Lite tank; four-bow top with slip cover and side curtains; glass front, and speedometer, nickel finish throughout.

Model 73—Continued

Since the simple Stanley power plant is, part for part, just the same in the large cars as in the small ones, this large touring car is as easy to drive as a runabout. Hence, the great pleasure of driving a car himself is enjoyed by many a Stanley owner, who would not feel competent or comfortable in driving a gasolene car of equal power.

A Model 73 car, with 36 inch wheels and geared 43 to 60, makes 560 revolutions per mile as to its rear wheels and 780 revolutions per mile as to its engine. Thus, at 30 miles per hour, the engine will make only 390 revolutions per minute.

The wheel base is 120 inches. The tread is 56 inches. The tires on quick detachable rims are 36 x 4, a most unusual size on a car of the price and weight of this car. The price of the car, with equipment indicated above is \$1,660.



MODEL 73, TOURING CAR, FIVE PASSENGERS

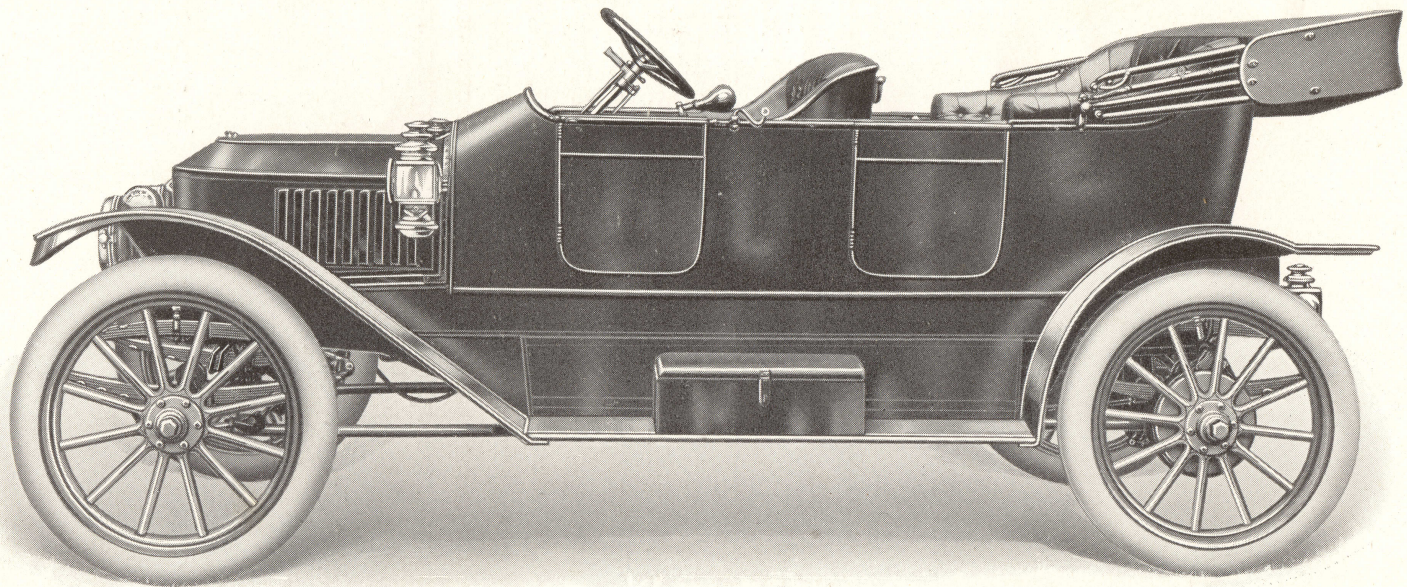
Price, \$1,660, including top with slip cover and side curtains; glass front; speedometer; headlights and Prest-O-Lite tank; nickel finish throughout.

Model 74, Twenty H. P. Touring Car, Four Passengers, for 1912

\$1,660 with Equipment

This car is of our 20 horse-power, and is built on the same chassis as the Model 73 five-passenger touring car; and is the same in every particular except as to the body; and the body is the same except as to the width of the rear seat, which in the Model 74 is narrowed to a capacity for 2 passengers instead of 3.

The Model 74 has 120 inch wheel base, 36 x 4 inch tires on quick detachable rims; and the equipment includes four-bow top with slip cover and side curtains; glass front; speedometer; headlights and Prest-O-Lite tank. The car being identical with the Model 73, except for the width of the rear seat, the price is the same, \$1,660.



MODEL 74, TOURING CAR, FOUR PASSENGERS

Price, \$1,660, including top with slip cover and side curtains; glass front; speedometer; headlights and Prest-O-Lite tank; nickel finish throughout.

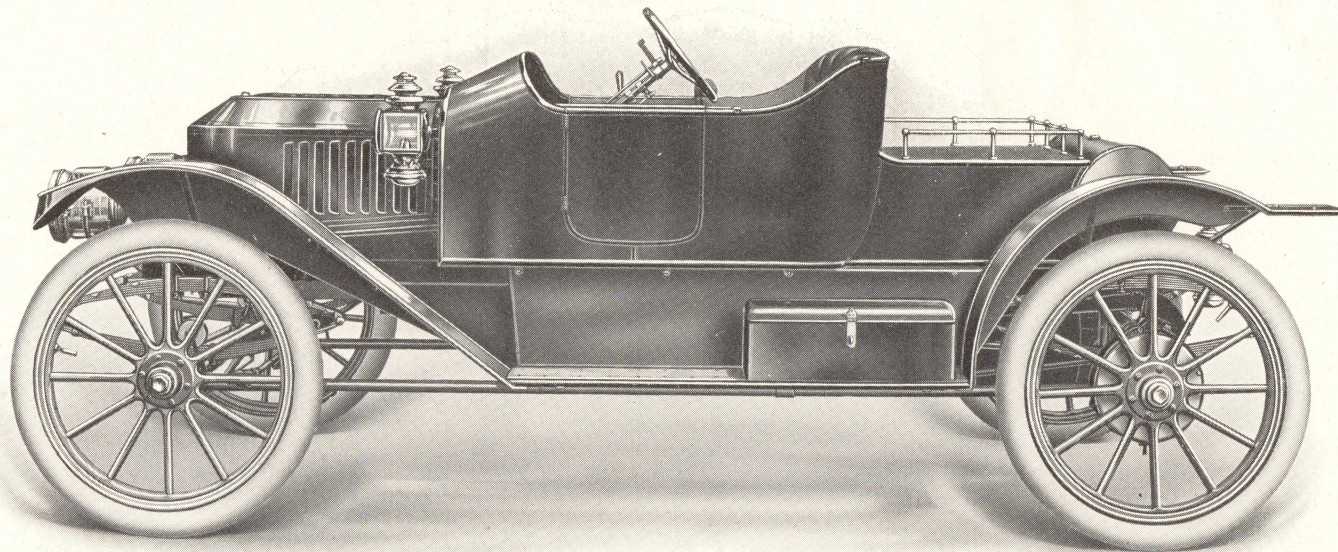
Model 75, Twenty H. P. Roadster, for 1912

\$1,600 with Equipment

Our Model 75, with hand-made aluminum body is intended for those who want a strictly two passenger car with a little extra speed. The 20 horse-power plant is used, as in the Model 73 and Model 74. The wheel base is 115 inches. The steering position is exceedingly comfortable, and since the seats are just midway between the axles, it is particularly easily riding.

The water tank holds 42 gallons — enough for upwards of 50 miles. The gasolene tank holds 20 gallons. The tires are 36 x 4 on quick detachable rims; a most unusual size on a car of this weight and price.

The equipment includes a three-bow top with slip cover and side curtains; a glass front; a speedometer; headlights and a Prest-O-Lite tank. Price, including equipment, \$1,600.



MODEL 75, ROADSTER, TWO PASSENGERS

Price, \$1,600, including top with slip cover and side curtains; glass front; speedometer; headlights and Prest-O-Lite tank; nickel finish throughout.

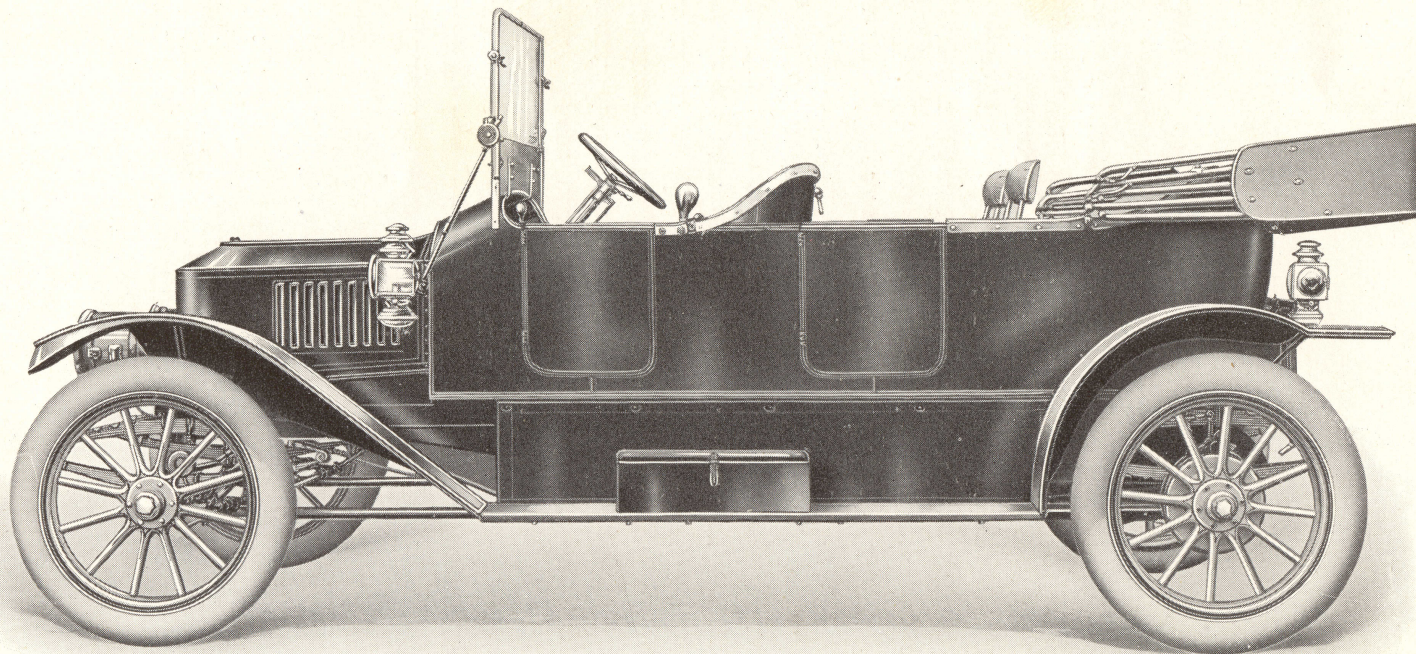
Model 87, Thirty H. P. Touring Car, Seven Passengers, for 1912

\$2,500 with Equipment

Our new 30 horse-power, seven-passenger touring car is built, like the Model 74 and Model 73, with a hand-made aluminum body, detachable from the chassis.

The power plant consists of a 26 inch boiler and our heavily remodelled $4\frac{1}{2} \times 6\frac{1}{2}$ engine. The wheel base is 134 inches and the tires are $36 \times 4\frac{1}{2}$ on quick detachable rims. The equipment includes five bow top with slip cover and side curtains, glass front, headlights, Prest-O-Lite tank and speedometer.

This car is offered in response to a steady demand for a large and extremely powerful car, and we are adapting to this use the power plant which we have used so successfully in recent years in our 9 and 12 passenger mountain wagons. The service those cars have been put to in mountain resort work in many parts of the country has proved the power plant to be most remarkably sturdy and efficient. Adapting it now to ordinary touring means that it will not be driven to anywhere near its capacity, and therefore, it will have an almost unlimited serviceability. Price with equipment, \$2,500.



MODEL 87, TOURING CAR, SEVEN PASSENGERS

Price, \$2,500, including five-bow top with slip cover and side curtains, glass front, speedometer, headlights and Prest-O-Lite tank, nickel finish throughout.

Model 86, Thirty H.P. Mountain Wagon, Twelve Passenger, for 1912

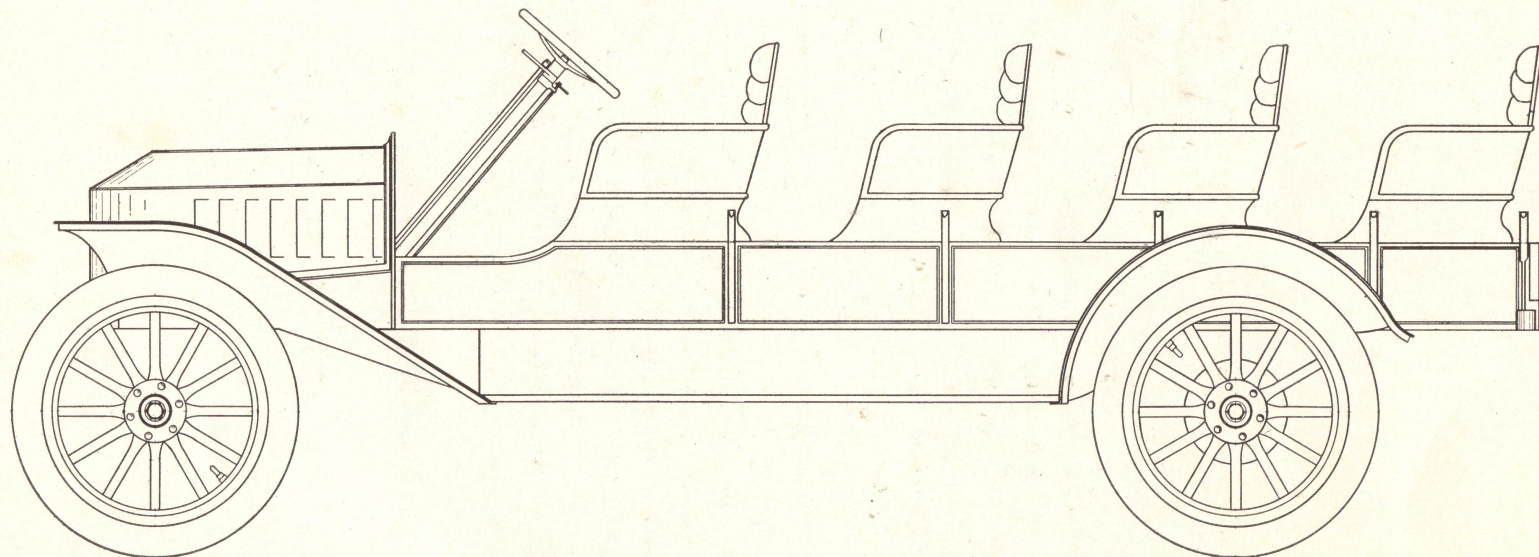
\$2,300 with Equipment

The steady and growing demand for this Mountain Wagon, which we have made for several years in small quantities, compels us to add it this year to our regular models. The service rendered has been uniformly successful, especially on hard mountainous roads. These cars have been great money makers for their owners. No other cars have been able to compete with them; first, because their reliability has proven so much greater than gas cars and they don't leave their passengers on the road; second, because the passengers appreciate their easy riding; and third, because the expenses of running them, especially as to tires, are so low as to leave the owner a good margin of profit.

There are four seats, each for three passengers. The wheel base is 136 inches. The rear tires are 36x5. The front tires are 36x4½. The rear seats are removable, thus making a roomy baggage wagon, with inside body dimensions of about 44x104. Detachable side-boards are furnished for use in baggage service.

A number of these cars are in service as truck and delivery wagons and they can be recommended highly for this use, up to a load of about 2500 pounds.

The equipment includes the four seats, a folding top, headlights and Prest-O-Lite tank, glass front, speedometer, and oil lamps, horn, etc. The price with this equipment is \$2,300.



MODEL 86, MOUNTAIN WAGON, TWELVE PASSENGERS

Price, \$2,300 with top; glass front; speedometer; headlights and Presto-O-Lite tank; nickel finish throughout.

